

# AN INNOVATIVE GROUP SELF-DIRECTED, PROBLEM-BASED LEARNING METHOD AND ITS ASSESSMENT IN MASTER OF PUBLIC HEALTH (M.P.H) PROGRAM

**Author:** Mohammadzadeh Z

**Introduction:** Regarding the importance of student-centered learning in postgraduate courses, we decided to design and perform a problem-based learning (PBL) method and evaluate it in the epidemiology and research methods course in M.P.H program.

**Methods:** This is a one-group study. Participants were oriented about course objectives and divided in groups of three. Course duration was two-hour sessions. Fourteen problems were given to the groups to be discussed. The results of discussions were presented in large group. Students' attitudes about the course was gathered using questions by means of point Likert scale and two open questions.

**Results:** Observations confirmed participants' interest to the new learning method by doing their exercises on time. Attitude assessment showed that the mean of student scores was between , and out of . The mean and standard deviation of satisfaction score about the new method of teaching were  $\pm$  , out of .

**Conclusions:** Considering the success of this course, it is worthwhile to try this learning method in similar courses for postgraduate students.

**Key Words:** PBL-M.P.H program-Epidemiology-Research Methodology

**Address:** Mohammadzadeh Zahra; School of Health, Isfahan University of Medical Sciences and Health Services, Isfahan.

**Source:** Iranian Journal of Medical Education ( ) :

معرفی یک روش خودآموزی گروهی مبتنی بر حس مسأله  
و ارزشیابی آن در دانشجویان دوره عالی بهاست عمومی

MPH

/ /

± /

PBL

(Problem Based Learning)

( )  
(Master of Public Health)

MPH

PBL

( )  
PBL

Barrows

( )

PBL

MPH

PBL

PBL

(Narrative form)

PBL

MPH

PBL

( )  
)

( )

(

Medline

... Index Medic us

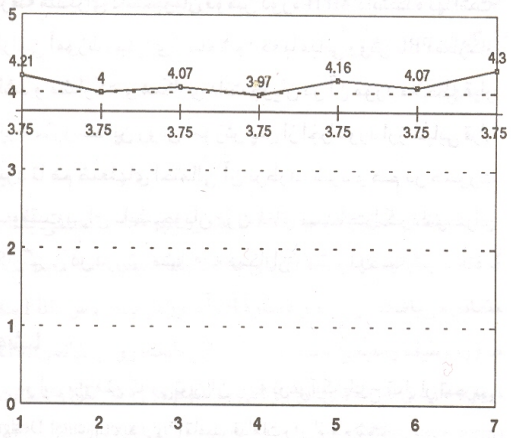
(Pre Experimental Design)

(Major-Concern)

Darkenwald

Merriam

Mean



۱- ایجاد انگیزه درونی؛ ۲- سازمان‌دهی مباحث؛ ۳- تکرار مطلب؛ ۴- تناسب تکالیف؛ ۵- شرکت فعال در یادگیری؛ ۶- محیط آموزشی مناسب؛ ۷- تناسب روش ارزشیابی با روش آموزش.  
نمودار ۱. میانگین نمرات کسب شده در هفت حیطه مورد ارزشیابی در مقایسه با معیار سنجش.

MPH

( )

= = = =

/

« »  
« » « »  
« »

PBL

( )

:( )

/

/

/

.( ) ( )

.( )

PBL

Jones

.( )

PBL

PBL

/ «

»

PBL

PBL

.( )

( )Peel

**References:**

- Blue A, Stratton T, Donnelly M, Nash P, Schwartz R. Students' communication apprehension and its effects on PBL performance. J Medical Teacher. ; ( ):
- Peel S. An innovative problem-solving assessment for groups of first year medical undergraduates – think tanks. J Medical Education. ; ( ):
- Lloyd-Jones G, Marjetson D, Bligh IG. Problem – based learning: A coat of many colours. J Medical Education. ; ( ):

...

×

%

(Variable)

(Bias)

MPH

( )

( )

) Student Centered

(

MPH